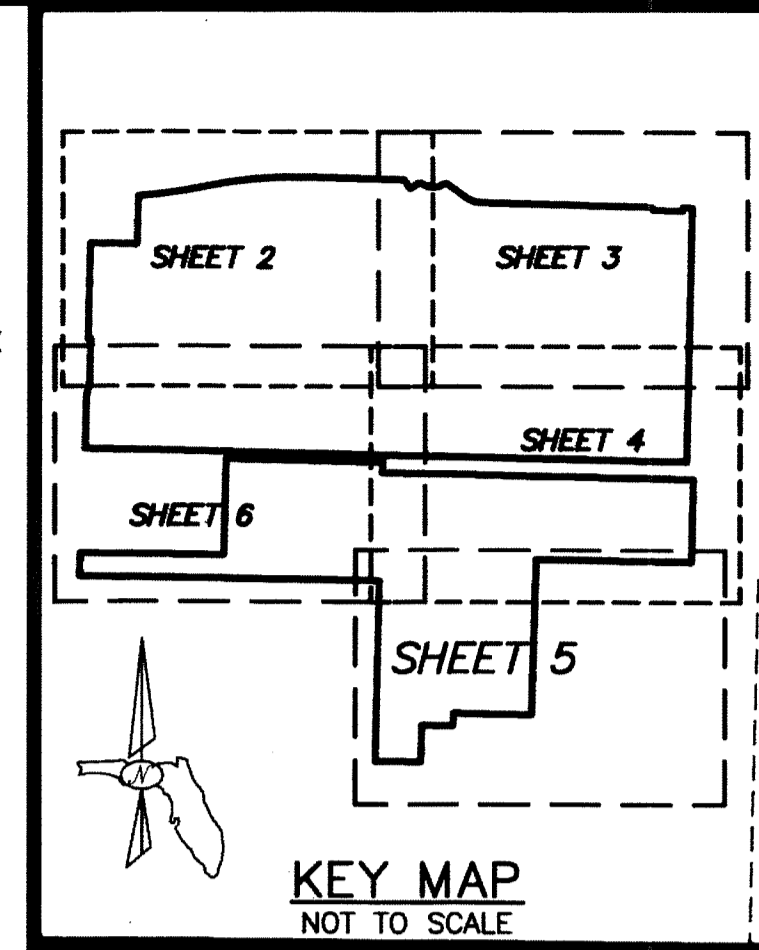
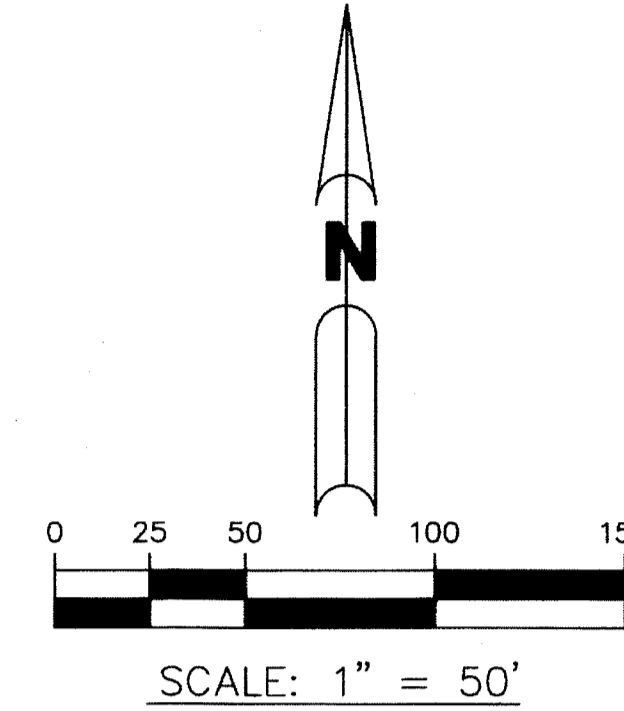


NORTHWOOD UNIVERSITY

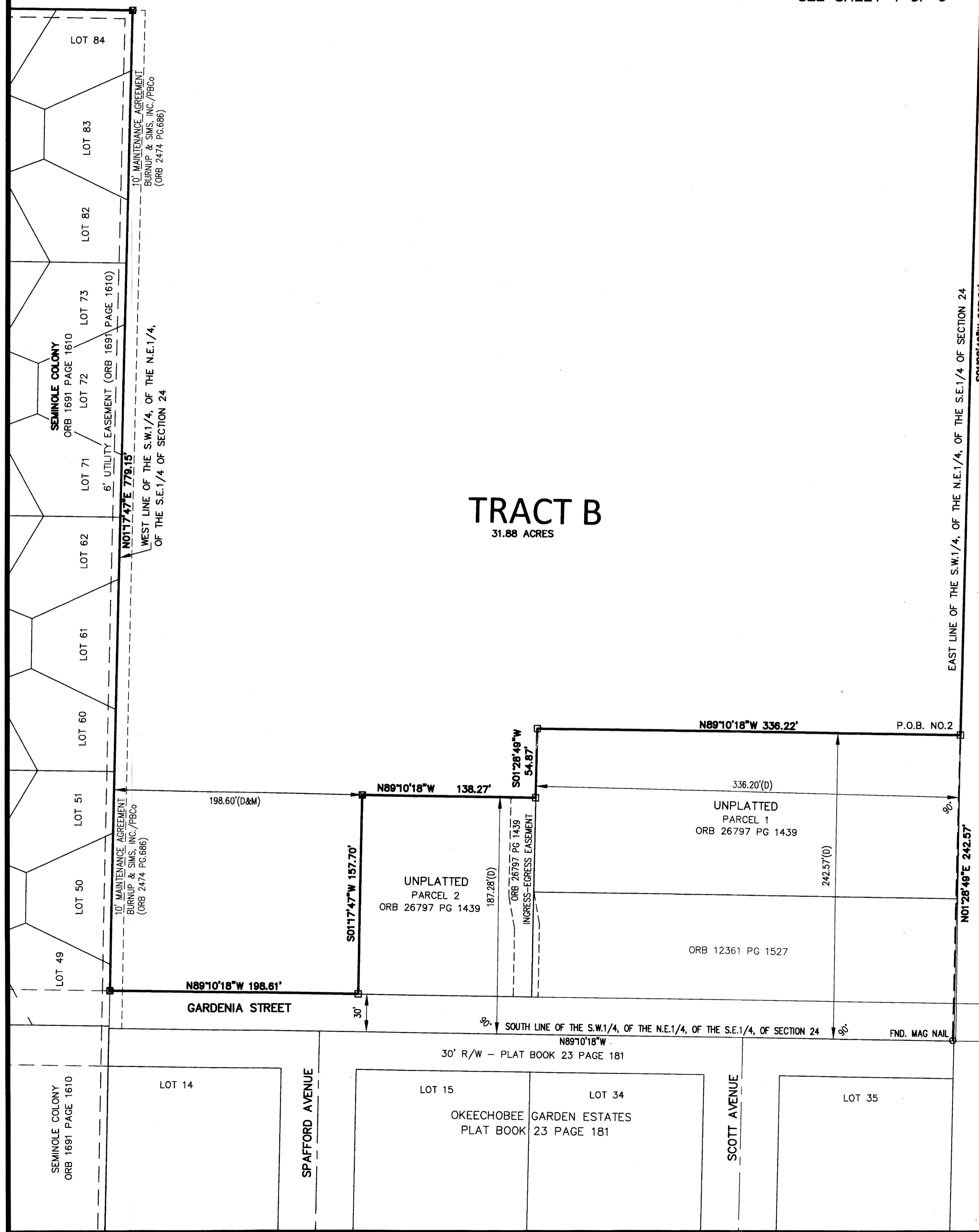
LYING IN SECTION 24 TOWNSHIP 43 SOUTH, RANGE 42 EAST, CITY OF WEST PALM BEACH, PALM BEACH COUNTY, FLORIDA;
 A REPLAT OF "F.E.C. RWY. CO. R/W", MILITARY PARK HALLS ADDITION, RECORDED IN PLAT BOOK 12, PAGE 44;
 AND A REPLAT OF TRACT "A" OF MINOR SUBDIVISION PLAT, RECORDED IN OFFICIAL RECORD BOOK 12619, PAGE 1748,
 OF THE PUBLIC RECORDS OF PALM BEACH COUNTY, FLORIDA
 SHEET 5 OF 6

SEE SHEET 4 OF 6

THIS INSTRUMENT PREPARED BY
 JOHN E. PHILLIPS III, P.S.M. 4826
BROWN & PHILLIPS, INC.
 PROFESSIONAL SURVEYING SERVICES
 CERTIFICATE OF AUTHORIZATION # LB 6473
 1860 OLD OKEECHOBEE ROAD, SUITE 509
 WEST PALM BEACH, FLORIDA 33409 561-615-3988, 615-3991 FAX
 561-615-3988, 615-3991 FAX E-Mail: info@brown-phillips.com



49



UNICO PROPERTY © NORTHWOOD UNIVERSITY
 TRACT "B" MINOR SUBDIVISION PLAT
 ORB 12619 PAGES 1748-1752

P.O.C. No.2
 S.E. CORNER OF THE
 S.E.1/4, N.E.1/4, S.E.1/4
 SECTION 24